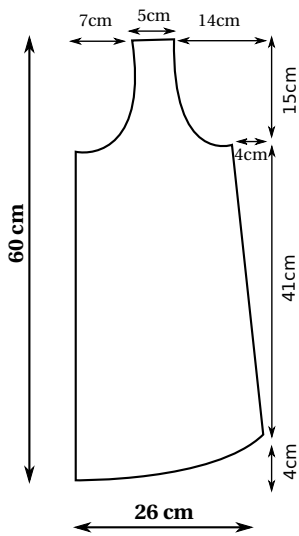
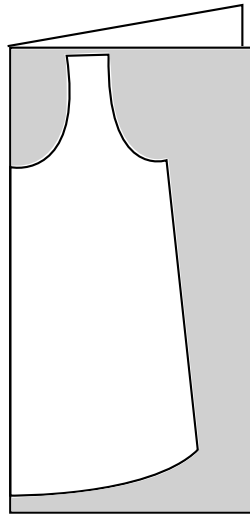


The Quick Carrier

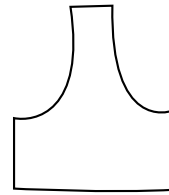
1. Draft a paper pattern using the dimensions below. The shape of the bag doesn't need to be exactly the same as this one, but make sure the handles are not too short or it will be hard to put things in and out of the bag.
2. Cut out the paper pattern, place the straight edge on the fold of the bag fabric and cut front of main bag out (seam allowances are included). Repeat for other side of bag.
3. Trace the top third of the main bag pattern onto another sheet of paper to create the facing pattern sheet. Cut out, place on fold of fabric and cut a front and back, as with main bag piece.



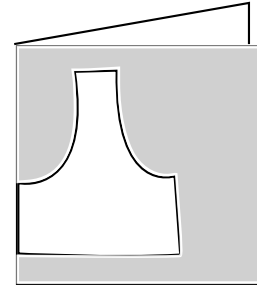
1. Draft pattern onto paper



2. Place on fold and cut x 2



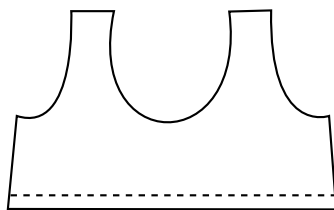
3. Draft facing onto paper



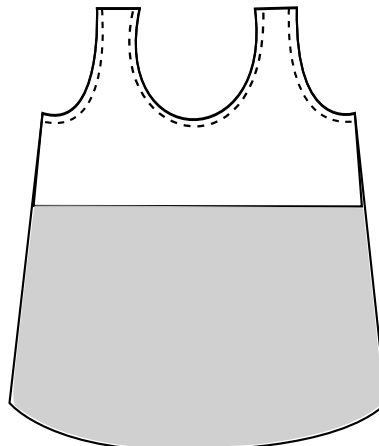
4. Place on fold and cut x 2

You should now have two full size bag pieces, and two short facing pieces.

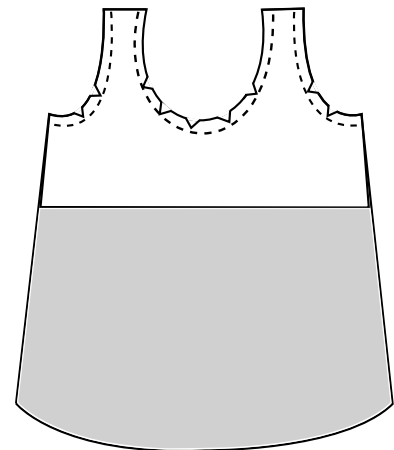
3. Finish the bottom straight edge of the bag facings using an overlocker, zig-zag stitch, or by turning under twice and straight stitching. If using an overlocker or zig-zag stitch you can then turn under once and straight stitch to hide the stitching. This is not really necessary as this seam will be on the inside of the bag.
4. Place bag and facing right sides together and sew together along the three top curves. Clip curves, turn right side out and press seams.



3. Finish bottom edge of facing, turn under and top stitch



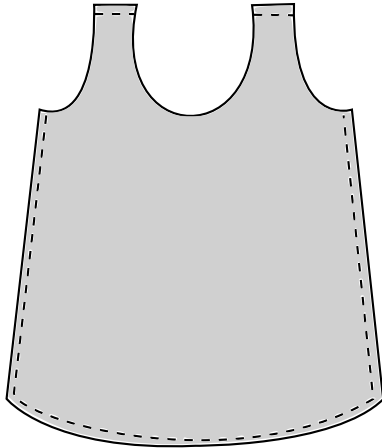
4. Sew Facing to bag along curves



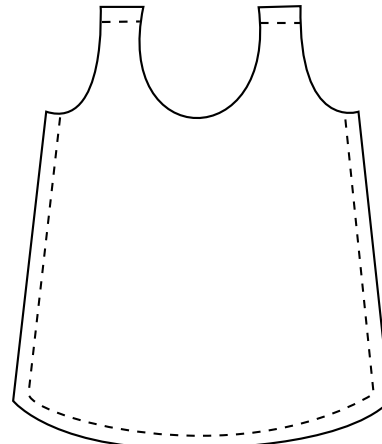
5. Clip seams, turn through and press

5. Place bag pieces **wrong** sides together (facings will be right sides together) and sew three straight sides and straight top of handles with a .5cm seam allowance. Be careful to catch both sides of the facing in the seam.

6. Trim any threads or seams which may have ended up larger than .5cm. Turn bag inside out and press the seams. With bag still inside out, sew the straight edges of bag and handles again, this time with a 1.5cm seam allowance, being sure to encase the raw edges of the first seam.

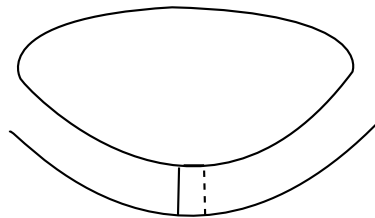


5. Sew wrong sides together with .5cm seams



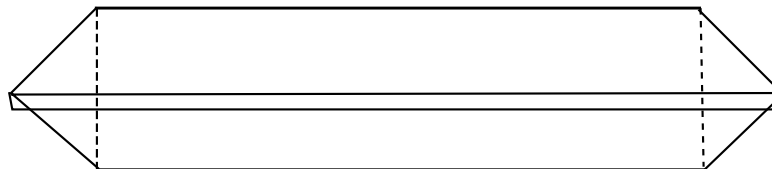
6. Sew right sides together with 1.5cm seams

7. Turn bag right side out again and press seams. Flatten seams at top of handles and top stitch flat.



7. Flatten seam at top of handle and top stitch

8. Turn bag inside out again. Pinch bottom corner of bag to create a triangle. The side seam and the bottom seam should be aligned. Sew across corner.



8. Looking at bottom seam of bag when inside out

You're all done! Enjoy your bag!